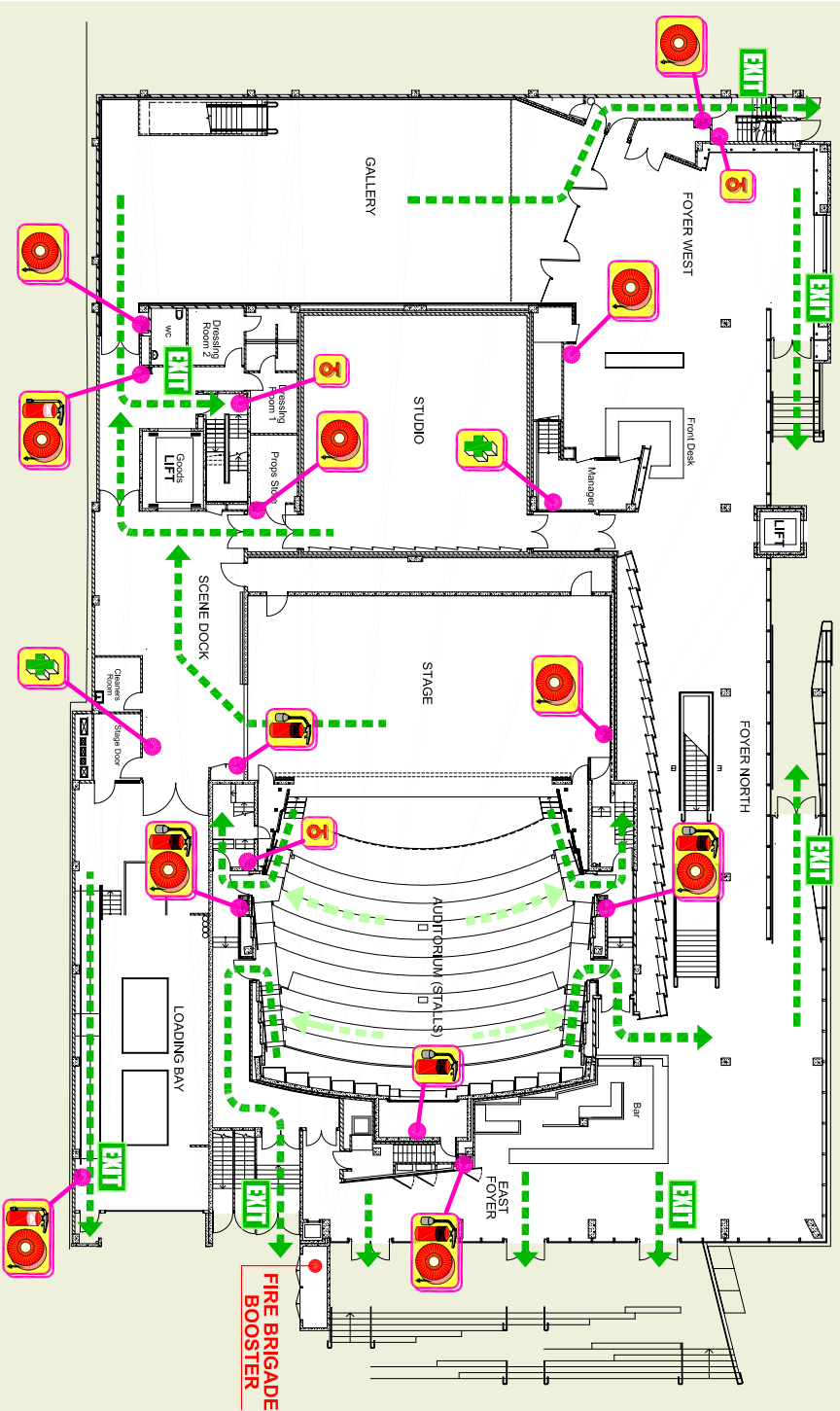


EMERGENCY DIAGRAM

GLASSHOUSE ARTS, CONFERENCE AND ENTERTAINMENT CENTRE.

CLARENCE & HAY STREETS, PORT MACQUARIE NSW 2444



GROUND FLOOR

LEGEND

- Fire Extinguisher
- Fire Hydrant
- First Aid kit
- Fire Hose Reel
- Egress Route

EMERGENCY PROCEDURES

ON HEARING THE ALERT TONE

BEEP ... BEEP ... BEEP ...

- Be aware of an emergency situation occurring. (DO NOT EVACUATE ON THIS TONE)
- Staff to attend to emergency procedures, all other occupants to remain where they are.
- All occupants are to follow the instructions given over the P.A. at all times.

ON HEARING THE EVACUATION TONE

WHOOOP ... WHOOOP ... WHOOOP ...

- Staff to direct all occupants to evacuate the building via the nearest safe exit point.
- Assist Mobility Impaired Persons to a safe area.
- Once out of the building, proceed to the Assembly Area and wait for assistance from the responding emergency services.

SITE MAP / ASSEMBLY AREA

